



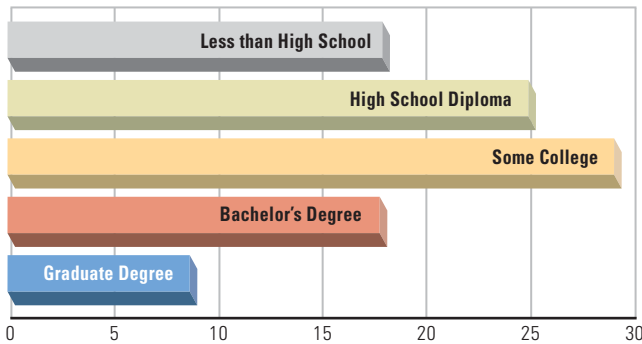
# TEXAS

Ofc. of the Gov. ED & Tourism Div.  
 211 E. 11th St., 4th Floor  
 Austin, TX 78701  
 Aaron Demerson, Director  
 512-936-0258

**"Over the past decade, Texas has established a jobs-friendly environment that has powered our economic engine and attracted major employers in various growing industries, leading to increased demand for certified, high-skilled workers. The framework for technical training we're putting in place will enable workers to earn their technical certifications fast, at an affordable cost, and targeted to specific skills that are needed by industries."** — Gov. Rick Perry, Nov. 27, 2012, in announcing a new skilled work-force initiative

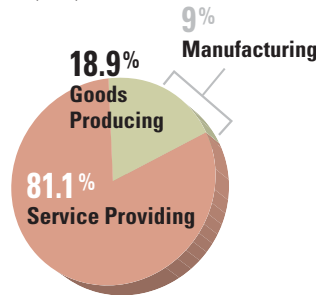
**Governor: Rick Perry (R)** [governor.state.tx.us](http://governor.state.tx.us)  
**Population 2011:** 25,674,681 **Population growth forecast 2011-2015:** 7.82% **Median household income:** \$49,047

### Work Force Education by Percentage



### Private Sector Employment

10,849,500



Mature firm tax index rank: **12**

New firm tax index rank: **42**

Manufacturing Capex 2011 (1): **\$17,618,544**

Manufacturing Capex on buildings and other structures (1): **\$2,394,891**

Avg. industrial retail electricity price (cents/kwh): **5.86**

Avg. annual pay in mfg.: **\$67,590**

Median age: **33.7**

Right-to-work state? **YES**

### Legislative Update

- On Nov. 27, 2012, Gov. Perry announced a collaboration between the Governor's Office, Texas Higher Education Coordinating Board and Texas Workforce Commission that will use competency-based learning to help Texans quickly receive certifications in high-demand industries.
- On Sept. 27, Gov. Perry said he would push for making the small business tax exemption permanent during the upcoming 2013 legislative session.
- On Oct. 8, Gov. Perry called for a four-year tuition freeze for incoming freshmen at state colleges and universities, "so that the amount students pay when they first arrive on campus will be locked in through what should be their senior year." He also called for tying 10 percent of funding for these state institutions to how they perform on graduating their students.

### Did You Know?

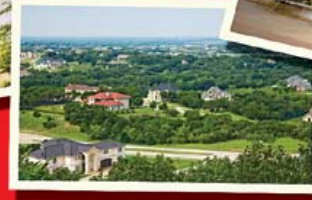
- Texas is the No. 1 exporting state for 10 years running and is home to 104 Fortune 1000 companies and 12.6 million workers.
- Texas was named the Top State for Business in July by CNBC. In May, Texas was named the Best State for Business by Chief Executive Magazine for the eighth year in a row.
- In March, the state debuted a new website — [www.Texas-WideOpenForBusiness.com](http://www.Texas-WideOpenForBusiness.com) — featuring an array of new tools for site selectors. The site's new Incentives and Financing section details the most commonly used state-level incentives and financing available to companies looking to create jobs in Texas.
- Texas has 148 institutions of higher learning that graduate a total of more than 238,000 students with degrees every year.

### Selected Corporate Facility Projects 2012

Company	City	County	Type	New/ Exp.	Product	Investment (\$millions)	Employment
Chevron Phillips Chemical Co.	Sweeny	Brazoria	MF	N	Petrochemicals	\$5,000	400
Formosa Plastics Corp.	Point Comfort	Calhoun	MF	E	Plastics	1,700	
Celanese Corp.	Clear Lake	Collin	MF	E	Methanol	1,000	
Samsung	Austin	Williamson	MF	E	Semiconductors	1,000	
Apple	Austin	Williamson	MF	N	Wireless Equipment	304	3,600
Arista Data Centers	Pflugerville	Travis	OF	N	Data Center	210	170
Anadarko Petroleum Corp.	The Woodlands	Montgomery	OF	E	Gas & Oil	180	
Prolamsa Group	Houston	Harris	MF	N	Metal	150	
Ash Grove Cement	Midlothian	Ellis	MF	E	Cement	125	
Continental Automotive Systems	Seguin	Guadalupe	MF	E	Auto Parts	113	300
Southwest Airlines	Dallas	Dallas	HQ	N	Airlines	100	
Bimbo Bakeries	Rockwall	Rockwall	MF	N	Bakery	75	130
Healthpoint Biotherapeutics	Fort Worth	Tarrant	MF	E	Pharmaceuticals	60	51
British Petroleum	Houston	Harris	OF	E	Computing Facility	45	
HID Global	Austin	Williamson	MF/DW	N	Electrical Equipment	35	239
Apache Corp.	Houston	Harris	OF	E	Oil & gas	28	
CyrusOne	Carrollton	Denton	OF	E	Data Center	23	
Whitmore Mfg. Co.	Rockwall	Rockwall	OF/MF/DW	E	Paint	20	
Cummins Southern Plains	Dallas	Dallas	DW	N	Engine Wholesale	19	
Baker Botts	Houston	Harris	OF	E	Legal Services	18	
CyrusOne	San Antonio	Comal	OF	E	Data Center	17	
CPS Energy	San Antonio	Comal	CC	N	Business Services	15	
Baker Hughes	Odessa	Ector	MF	N	Pressure Pumping Services	14	
Blue Horseshoe, Ltd	Plano	Collin	OF	N	Business Consulting	13	
Chevron Phillips Chemical	Port Arthur	Jefferson	MF	E	Chemicals	9	
Baker Hughes	Midland	Midland	MF	N	Sand Plant	8	
Baker Hughes	Odessa	Ector	DW	N	Sand Storage Facility	8	
Chesapeake Energy	Pearsall	Frio	OF/DW	N	Oil & Gas	8	

MF = Manufacturing OF = Office HQ = Headquarters RD = Research & Development CC = Contact Center DW = Distribution/Warehouse N = New E = Expansion

# Cedar Hill



Dallas County's *HOTTEST* destination!



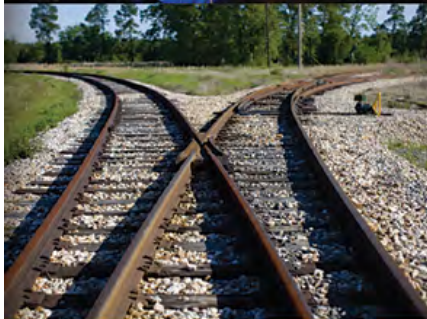
- 20 minutes from downtown Dallas
- Median household income of \$64,727
- Population base of 314,652 within a 15 minute drive time
- Development incentives available!

[CedarHillEDC.com](http://CedarHillEDC.com)

972.291.5132



Use your smart phone's QR code scanner to see our latest video!



## Opportunity like this **is rare.**

**This is TexAmericas Center –**  
an expansive business and industry resource.

- Nearly 12,000 acres
- Located in the heart of Bowie County, Texas
- Abundant natural and human resources
- Adaptable infrastructure
- Pro-Business community



**TexAmericas**  
CENTER™

[texamericascenter.com](http://texamericascenter.com) • 107 Chapel Lane • New Boston, TX 75570 • 903.223.9841