



"We've worked with the business community, advocates for the LGBT community and other North Carolinians who know our state is stronger because of our diversity, and I will keep working to make our state a welcoming and inclusive place."

— Gov. Roy Cooper, Oct. 18, 2017, on signing a non-discrimination executive order

North Carolina Department of Commerce
301 N. Wilmington St.
Raleigh, NC 27601-1058
Anthony "Tony" Copeland
SECRETARY
919-814-4600

nccommerce.com

North Carolina

Pop. (2017): 10,304,250

Median household income: \$48,918

Credit Rating: AAA/Stable

Pop. growth 2017-2022: 1.10%

Median age: 38.6

Right-to-work state: Yes

Legislative Update

- A recap of the 2017 session from Raleigh law firm Smith Anderson notes, "Governor Cooper and the General Assembly reached a compromise during session for repealing House Bill 2, the controversial 'bathroom' law that sparked tourism groups and businesses to boycott the state because they viewed the law as discriminating against the LGBTQ community." The repeal occurred in time for North Carolina to be considered again as a host state for various college and pro sporting events.
- A provision in the budget allows a company that invests \$4 billion or more and creates at least 5,000 new jobs to receive a tax refund for up to 25 years, twice as much as current incentives.
- As part of a schedule of corporate income tax reductions that began with measures passed during the 2015 session, the rate is further reduced from 3 percent to 2.5 percent for taxable years beginning on or after January 1, 2019. The mill machinery tax has been repealed effective July 1, 2018.



11th

Business Tax Climate Rank Change 2017-2018: 0



7th

Higher Ed. R&D Expenditure: \$2,938,094



3rd

Number of NCRCs: 388,037 | Percent Improvement 2017-2018: 13%



22nd

ITIF Score: 65.6



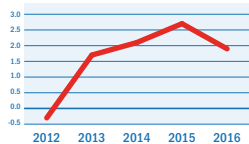
14th

Lowest Electric Power Cost (cents/kWh): 6.39



15th

GDP
10th



2016 GDP
(in millions of current US\$)
\$521,621

Selected Corporate Facility Projects 2017

COMPANY	CITY	COUNTY	TYPE	NEW/ EXPANDED	PRODUCT	INVESTMENT (US\$ M)	EMP
Gebrüder Egger Og	Linwood	Davidson	MF	N	Wood Products	700	770
Clearwater Paper Corp.	Shelby	Cleveland	MF	E	Paper	330	180
Pilgrim's Pride Corp.	Sanford	Lee	MF	E	Meat Processing	117	350
GKN Driveline North America	Newton	Catawba	MF	E	Auto Parts	110	143
Corning	Midland	Cabarrus	MF	E	Glass	109	200
Apple	Maiden	Catawba	DT	E	Data Center	100	
Freudenberg It LP	Durham	Durham	DT	E	Data Center	100	200
Novozymes North America	Franklinton	Franklin	MF	E	Chemicals	100	110
Pfizer	Sanford	Lee	MF	E	Pharmaceuticals	100	40
T5 Data Centers	Kings Mountain	Cleveland	DT	E	Data Center	69	
Corning	Newton	Catawba	MF	E	Glass	67	210
Credit Suisse (USA)	Research Triangle Park	Wake	HQ	E	Financial Services	65	1,200
Staples	Charlotte	Mecklenburg	DW	N	Office Supplies	64	20
MetLife	Cary	Wake	OF	E	Insurance	63	
Oerlikon Metco Ag, Wohlen	Huntersville	Mecklenburg	MF/RD	N	Chemicals	62	93

DT = Data Center | MF = Manufacturing | OF = Office | HQ = Headquarters | RD = Research & Development | DW = Distribution/Warehouse

Did You Know?

State government backed four separate bids for Amazon HQ2 from the Charlotte Region, Hickory, the Triad Region and the Research Triangle Region.

The NCWorks Commission in November approved and endorsed four new regional plans — NCWorks Certified Career Pathways — to help job seekers enter the fields of advanced manufacturing, health care and logistics. Since 2016, the commission has approved a total of 18 Certified Career Pathways.

More than half of the approximately 160 corporate facility investments tracked in Greater Charlotte by Site Selection's Conway Projects Database since January 2015 involve manufacturing.



What are Smart Sites?

- *Shovel-ready for development*
- *On-site municipal electric service*
- *Water & sewer within 500 feet*
- *Within 5 miles of Interstate or Interstate-quality highway*
- *Reviewed and qualified by consultants and engineers*

New Bern, Coastal Carolina Regional Airport Land:

- 25.3 acres, Smart Sites qualified
- US 70 (0.5 mi)
- Sale price: lease only

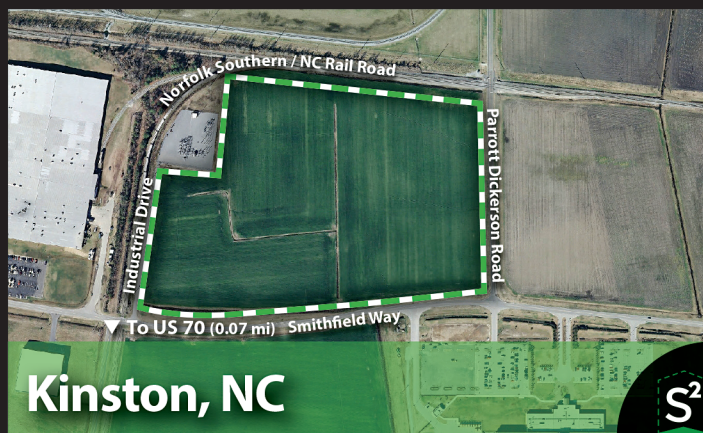
Kinston, Highway 70 Industrial Park:

- 34 acres, Smart Sites qualified
- US 70 (0.07 mi)
- On-site rail: Norfolk Southern
- Sale price: \$22,500 per acre

Greenville, Indigreen Corporate Park:

- 95 acres, Smart Sites qualified
- US 264 (1.2 mi)
- Sale price: \$30,000 per acre

Copyright © 2017 Electricities of North Carolina, Inc.



We call them Smart Sites. You'll call them a no-brainer.

Smart Sites are a slam-dunk choice for companies that are ready to grow now. Faster construction, fewer uncertainties and less risk for companies and site selectors alike — that's the genius of the Smart Sites qualification program. But that's not all. Our many Smart Sites are located in some of the best places in America to live and do business. To learn more about these properties and our growing list of other Smart Sites, contact Brenda Daniels at 800.768.7697 ext. 6363 or bdaniels@electricities.org. It's a no-brainer.

